

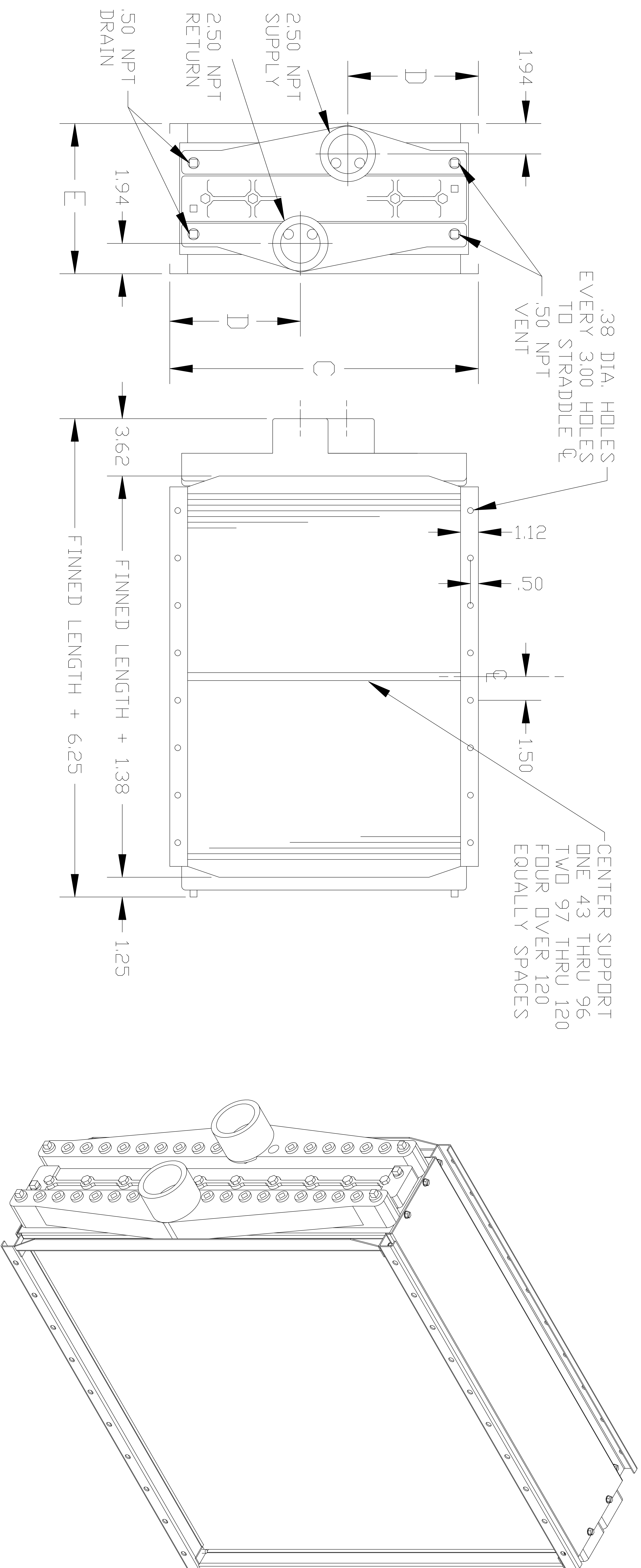
INDUSTRIAL HEAT TRANSFER, INC.

# TYPE 'K'

FLUIDS COILS 4,6,8,10 & 12 ROWS

## IHT-13

DATE: 12-12-08  
SUPERSEDES: 9-1-90



FINNED WIDTH	C	D
18	19.50	8.25
24	25.50	11.25
30	31.50	14.25
33	34.50	15.75

COIL WIDTH # OF ROWS	E
4	9.50
6	12.50
8	15.50
10	18.50
12	21.50

FIN MAT'L	FIN SERIES
ALUM.	77 108 144 168
COPPER	

TUBE MAT'L
COPPER
RED BRASS
90-10 CU-NI

	RIGHT HAND
	LEFT HAND